



100% online training that's:  
Fast | Effective | Low cost



## Worker crushed by excavator

### Summary

A waste management company has been fined after a young employee was run over by an excavator that left the 24-year-old with serious injuries.

### What happened

The employee was only in his second week of employment at the site when he was struck from behind by an excavator and run over. He suffered fractures to both feet.



### The investigation

An investigation by the Health and Safety Executive (HSE) found that the company had failed to ensure a safe system of work was in place. The injured man was working on a waste pile near moving vehicles with no physical separation between them. There was no risk assessment or system of work to protect pedestrians from vehicle movements.

### The outcome

The company pleaded guilty to breaching Section 2(1) of the Health and Safety at Work etc. Act 1974. It was fined £4,000 and ordered to pay £4,285 in costs.



### Additional context

HSE guidance clearly states that pedestrians and vehicles should be segregated when waste is being manually sorted. By law, employers must ensure traffic routes can be used without risking the safety of workers nearby.

The HSE inspector said:

"This incident was easily avoidable by implementing control measures and safe practices to ensure that workers were not put at risk from moving vehicles, including clear segregation and safe refuges.

### More info

Guidance is available at:

<https://www.hse.gov.uk/waste/transport.htm>

# CPR skills to become part of driving theory test

## Summary

From early 2026, learner drivers will need to demonstrate knowledge of cardiopulmonary resuscitation (CPR) as part of their theory test.

## Background

The Driver and Vehicle Standards Agency (DVSA) has announced that new questions on life-saving skills will be added to both car and motorcycle theory exams.

The aim is to ensure more people are prepared to respond if they come across a cardiac arrest. With drivers often being the first at the scene of an emergency, understanding CPR and how to use a defibrillator could make the difference between life and death.

The DVSA has already updated its official learning resources, meaning the 2.4 million people who sit their theory test each year will now encounter scenarios such as: “Who can use a public access defibrillator?” – with the answer being “anyone”.

Defibrillators are designed to be straightforward to use, with voice or visual instructions guiding the responder. When combined with CPR, they can dramatically improve survival rates: evidence suggests that if both are administered within minutes of collapse, survival could reach 70%. Without intervention, survival is typically below 10%.

CPR itself can be “hands-only”, focusing on chest compressions to keep blood circulating until medical help arrives. One of the new questions will cover the correct depth of compressions.

Current NHS guidance is to:

- Kneel next to the person and place the heel of your hand on the breastbone at the centre of their chest. Place the palm of your other hand on top of the hand that's on their chest and interlock your fingers
- Position yourself so your shoulders are directly above your hands
- Using your body weight (not just your arms), press straight down by 5 to 6cm (2 to 2.5 inches) on their chest

- Keeping your hands on their chest, release the compression and allow their chest to return to its original position
- Repeat these compressions at a rate of 100 to 120 times a minute until an ambulance arrives or for as long as you can

By embedding this knowledge into the driving test, the DVSA hopes to ensure that millions of new drivers leave with not only road safety awareness but also essential life-saving skills.





## Fatal fall from height

### Summary

An airport company has been fined £144,050 for failures that led to the tragic death of a 59-year-old man.

### What happened

The fatal incident happened at Prestwick Airport on Wednesday 11 January 2023.

The fatally injured man was preparing to unload cargo from an aircraft using a pallet loader. He had positioned the loader and was repositioning a guardrail when it suddenly gave way and he fell to the tarmac, about 10 feet below.

His colleagues went to his assistance and paramedics attempted CPR and advanced life support. These efforts proved unsuccessful and he was pronounced dead at the scene.

### The investigation

The Health and Safety Executive investigation found that one of the guardrail posts had completely fractured. There were visible signs of significant corrosion, discolouration and flaking white paint around the area.

Metallurgical examination of the guardrail posts found differences in chemical composition, manufacturing, and wall thickness which indicated the posts were manufactured from two different tubing sections.

These welded sections were not a feature of the manufacture's original design and appear to have been modified while the loader was under the ownership of Prestwick Airport. The



*CCTV footage showed the platform loader in situ, at the open door of the rear aircraft cargo hold*



welds on both the guardrail posts contained defects which would allow moisture in, creating a corrosive environment and speeding up deterioration.

There was no record of any modification or repair to the loader guardrail involving welding and the maintenance programme in place at the time did not cover the parts of the guardrail where failure or deterioration could lead to health and safety risks.

### The outcome

The airport company pleaded guilty to a charge contrary to Regulations 5(1) of the Provision and Use of Work Equipment Regulations 1998 and Section 33 (1)(c) of the Health and Safety

at Work etc. Act 1974. It was fined £134,000 with a Victim Surcharge of £10,050.

### Additional context

Since the incident, Prestwick Airport has undertaken a review of all work at height.

Checks of the guardrails on the platform loaders have been added to the list of checks conducted during the annual service and inspection schedule and the failed guardrail was replaced by a new rail from the manufacturer.



Take industry's leading Health & Safety course for managers, IOSH Managing Safely, and add 5 courses from our Mix and Match selection to tailor your learning:

**IOSH Managing Safely**

**5 IATP / RoSPA / IoH / CPD Assured Courses**

**£125 +VAT**

Save £85



If you've already completed IOSH Managing Safely, then you can top it up with IOSH Managing Occupational Health & Wellbeing and IOSH Managing Sustainably:

**IOSH Managing Occupational Health & Wellbeing**

**IOSH Managing Sustainably**

**£230 +VAT**

Save £20



Help your organisation to move beyond compliance by including IOSH Managing Sustainably in your bundle:

**IOSH Managing Safely**

**IOSH Managing Sustainably**

**5 IATP / RoSPA / IoH / CPD Assured Courses**

**£230 +VAT**

Save £105



Help your organisation to protect people by including IOSH Managing Occupational Health & Wellbeing in your bundle:

**IOSH Managing Safely**

**IOSH Managing Occupational Health & Wellbeing**

**5 IATP / RoSPA / IoH / CPD Assured Courses**

**£230 +VAT**

Save £105



Help your organisation to build a people-first culture with our ultimate bundle:

**IOSH Managing Safely**

**IOSH Managing Sustainably**

**IOSH Managing Occupational Health & Wellbeing**

**5 IATP / RoSPA / IoH / CPD Assured Courses**

**£345 +VAT**

Save £115



# Company director killed by reversing HGV

## Summary

A textile manufacturer has been fined £220,000 after one of its directors was killed by a reversing HGV .

## What happened

The director had offered to stay behind at the company warehouse to wait for the return of the vehicle on 22 June 2023. The truck arrived at around 5.30pm. The director spoke to the driver and confirmed he would act as banksman to help the vehicle reverse into the warehouse.

During the manoeuvre, the driver lost sight of the director and when he got out to check, he found him trapped between the vehicle and some steel storage racks in the warehouse. The driver called paramedics, but the injured man died in hospital from his injuries.

## The investigation

The Health and Safety Executive (HSE) investigation identified a number of failings exposing employees to various risks, including having no safe system in place for reversing HGVs. Employees confirmed they had been doing the task for several years but had never received any training. This included one employee who said he had on occasion reversed HGVs into the warehouse with someone else acting as banksman – despite neither being trained to do so.

The HSE investigation also found the company had no risk assessment in place in relation to this work, with the regulator serving it with an improvement notice. Following the incident the company carried out a risk assessment that resulted in a



safe system of work being implemented, which meant vehicles were no longer reversed using a banksman.

## The outcome

The company pleaded guilty to breaching section 33(1)(a) of

the Health and Safety at Work etc Act 1974. It was fined £220,000 and ordered to pay costs of £5,634.

## More info

See: <https://www.hse.gov.uk/workplacetransport/>



## Joinery firm failed to protect workers

### Summary

A joinery firm has been fined £10,000 after an unannounced visit by the Health and Safety Executive (HSE) found multiple health and safety breaches.

### What happened

HSE Inspectors visited the company on 25 May 2023. During their inspection they identified multiple failings relating to the company's control of wood dust as well as its maintenance of electrical systems. These failings meant that employees were being unnecessarily exposed to unnecessary risks.

### The investigation

The HSE inspection also found failures in the company's electrical installations, including both fixed and portable appliances and machinery. Exposed wiring carried the potential to put workers at risk of serious injury, or worse, from electric shock.



**Breathing in excessive amounts of wood dust can cause serious illnesses, including nasal cancer**

### Additional context

HSE provides a range of guidance on working in the woodworking industry, covering the Control of Substances Hazardous to Health (COSHH) Regulations 2002; exposure limits; extraction; and health surveillance.

The HSE inspector said: "Wood dust can cause serious health problems.

"It can cause asthma, which carpenters and joiners are four times more likely to get compared with other UK workers.

"There is clear health and safety guidance available to assist businesses in adequately controlling exposure to wood dust.

"Adequate control of wood dust is achieved when the eight principles of good control practice are applied."

[Also] "It is vital that maintenance is carried out to ensure the safety of electrical systems.

"The inspection and testing of equipment is also an essential part of any preventive maintenance programme.

### The outcome

The company pleaded guilty to breaching Sections 2(1) of the Health and Safety at Work etc. Act 1974 and was fined £10,000 with £4,428 costs.

### More info

More information about asthma can be accessed at:

<https://www.hse.gov.uk/asthma/index.htm>

HSE guidance on working in the woodworking industry can be accessed at:

<https://www.hse.gov.uk/woodworking/>

HSE guidance about electricity can be accessed at:

<https://www.hse.gov.uk/electricity/>

## £1 million fine after worker killed by reversing HGV

### Summary

A grocery supplier has been fined £1 million after a worker was killed by a reversing HGV during a delivery.

### What happened

On 19 February 2019, the man and a colleague were making a delivery. He was acting as a banksman, directing his colleague who was reversing the HGV. While attempting to guide the vehicle into the unloading area, he became trapped between the vehicle and a wall. He suffered fatal crush injuries.

### The investigation

A Health and Safety Executive (HSE) investigation found that the company had failed to implement a safe system of work for vehicle movements. The company also failed to adequately assess the risks involved in the task or provide sufficient training for employees acting as banksmen.

### The outcome

The company pleaded guilty to breaching regulation 2(1) of the Health and Safety at Work etc Act 1974. It was fined £1 million and ordered to pay full prosecution costs of £11,950.07.

### Additional context

After the hearing, the HSE inspector said:

“Nearly a quarter of all deaths involving workplace transport occur during reversing, most of which can be avoided by taking simple precautions.

“All work settings involving vehicles need to consider the risks arising from their use and implement adequate measures to ensure the safety of those involved in these activities.”



### More info

Free guidance on reversing vehicles is available at:

<https://www.hse.gov.uk/workplacetransport/information/reversing.htm>

## Young worker injured by a rotating blade

### What happened

On 8 June 2021, the 18-year-old apprentice, who had been with his employer for six months, was using a portable table saw to cut plasterboard.

He used his left hand to flick away material on the saw blade. His hand made contact with the rotating blade, cutting off his thumb. He raised the alarm with colleagues who took him to hospital. His thumb was found a short time later and taken to the hospital. After initial treatment the teenager was transferred to another hospital, where he underwent surgery to successfully reattach his thumb.

### The investigation

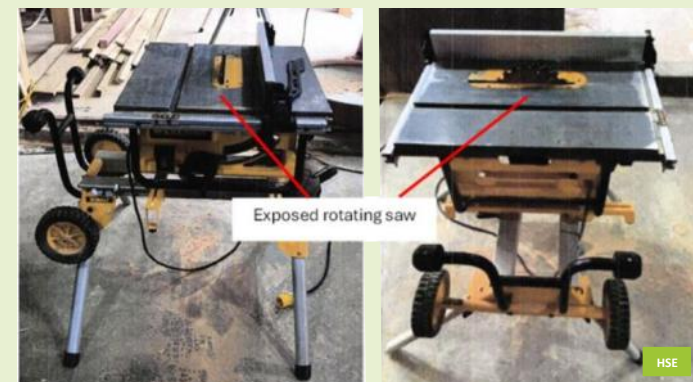
The Health and Safety Executive (HSE) investigation found that the employer failed to undertake a suitable and sufficient assessment of the risks to employees operating a table circular saw, ensure that the system of work for the operation of said saw was safe and appropriately supervised, provide your apprentice joiners with the information, instruction and training needed to operate said saw safely.

### The outcome

The company pleaded guilty to Section 2(1) and Section 33(1) (a) of the Health and Safety at Work etc. Act 1974. It was fined £40,000.

### Additional context

The Provision and Use of Work Equipment Regulations 1998 states employers must take effective measures to prevent access to dangerous parts of machinery or to stop the movement of any dangerous parts of it before any part of a person enters a danger zone.



### More info

See: <https://www.hse.gov.uk/work-equipment-machinery/introduction.htm>



## Worker struck by vehicle

### Summary

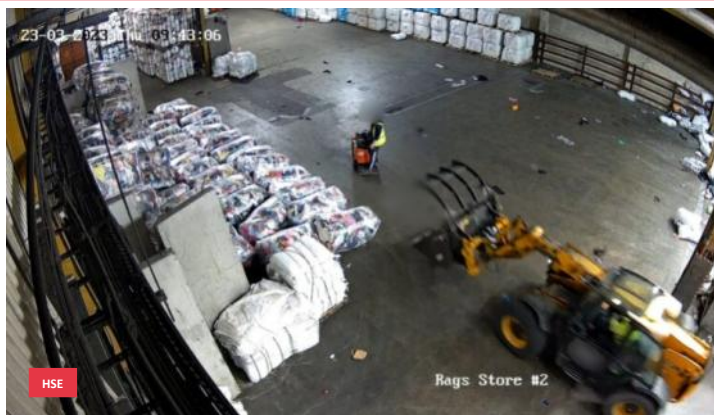
A company that reclaims and processes textiles has been fined £300,000 after one of its workers was hit by a telehandler.

The man, now 42, suffered serious injuries to his legs in the incident that happened on 23 March 2023.

### What happened

Stills from CCTV footage captured the scene moments before the man was struck. He had been using a ride-on electric pallet truck inside the factory building. The pallet trucks are used for transporting goods of clothing to sorting lines and other areas around the factory.

The man and his supervisor had been finding stock in the 'goods-in' area. He was using his pallet truck to return an empty cage when he was hit by a telescopic handler that was being driven by another employee.



*CCTV footage of the moments before the accident occurred*

### The investigation

An investigation by the Health and Safety Executive (HSE) found that the company failed to properly manage vehicle movements on site. This included organising the workplace in such a way as to ensure the safety of its employees, both pedestrians and those using vehicles.

### The outcome

The company pleaded guilty to breaching Section 2 (1) of the Health & Safety at Work etc. Act 1974, was fined £300,000 and ordered to pay costs of £7,732

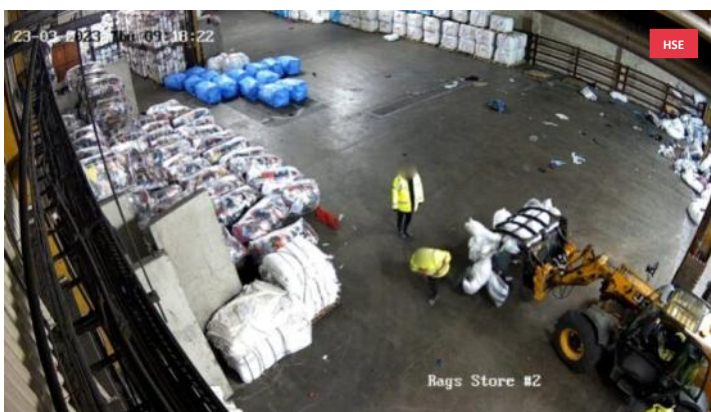
### Additional context

HSE provides guidance about what workplace transport arrangements can be put in place to prevent incidents. These include the importance of risk assessment considering the risks associated with impact from other vehicles in the area and what separation is required from those vehicles.

### More info

The guidance can be accessed at:

<https://www.hse.gov.uk/workplacetransport/>



*Poor working practices can be seen before the accident occurred*



Scan me!

## IOSH Working Safely

**£60+VAT**

- Rated "**Outstanding**" by IOSH during the Quality Review 2024
- **100% Online**, including the final assessments
- IOSH-approved **Tutor Support**
- **Immediate** start
- **24/7 Access**
- **Self-Paced** learning
- Digital **IOSH Certificate**



## Worker injured in fall from height

### Summary

A conservatory manufacturer and installation company has been fined £40,000 after an employee fell through the roof of a first-floor orangery home extension.

### What happened

The injured man was one of several people working to install an orangery extension covering the footprint of a former first-floor balcony at a house on 9 February 2024.

While working on the roof trusses, he stepped onto an unguarded opening for a future skylight, resulting in him falling approximately two metres to the floor below. He sustained a serious head injury, several broken ribs, a ruptured spleen and kidney damage. He remained intubated in hospital for approximately two weeks before surgery could be attempted.

The long term impact on him has been profound both physically, as his mobility has been affected long term, and mentally as he has since been diagnosed with PTSD.

### The investigation

An investigation by the Health and Safety Executive (HSE) found that no external scaffold had been put into place around the perimeter of the extension to provide safe access or prevent falls to the ground below. Additionally, there were no measures in place internally to prevent falls into the extension.

The HSE investigation also found that the company had failed to properly plan the work and to provide its workers with suitable instructions for carrying out their duties safely.

### The outcome

The company pleaded guilty to breaching Section 2(1) of the Health and Safety at Work Act 1974. They were fined £40,000 and ordered to pay £5,309 in costs.

**Working at height remains one of the leading causes of workplace injury and death in the UK.**

### More info

Guidance on working at height can be accessed at: <https://www.hse.gov.uk/work-at-height/index.htm>

Guidance on managing construction activities can be accessed at: <https://www.hse.gov.uk/construction/index.htm>



## Rogue gas fitter jailed

### Summary

A rogue gas fitter from Norfolk has been jailed after carrying out unsafe gas work at a residential property while suspended from the Gas Safe Register.

### What happened

The man has been sentenced to 46 weeks in custody after he carried out unsafe gas work while falsely claiming to be a member of the Gas Safe Register. He worked at a home in Norwich in January 2022, but there was a gas escape on the inlet to a cooker that had been fitted the day before by the 52-year-old.

### The investigation

An investigation by the Health and Safety Executive (HSE) found that the fitter had left the appliance in a condition where gas was leaking, and emergency repair work was required. The fitter had previously been served with a prohibition notice by HSE following unsafe gas work.

### The outcome

The man pleaded guilty to breaching Regulations 3(7) and 5(3) of the Gas Safety (Installation and Use) 1998 Regulations. He was sentenced to a total of 46 weeks in custody and was ordered to pay £1,000 costs.

### More info

Gas engineers and consumers can contact the Gas Safe Register in any of these ways:

- **Gas Safe Register** - <https://www.gassaferegister.co.uk/>
- **Phone** – Consumers: 0800 408 5500; Engineers: 0800 408 5577
- **Email** – enquiries@gassaferegister.co.uk

# Care home provider fined after death of patient

## Summary

A care home provider has been fined more than £50,000 after an elderly patient died in the early hours of Boxing Day in 2022.

## What happened

The patient had managed to leave the care home via a series of stairways and fire doors. An inspector from the Health and Safety Executive (HSE) counted 320 steps from his room to the care home's car park where his body was found.

## The investigation

As part of its investigation, HSE made enquiries regarding the use of an internal fire door and was unable to obtain corroborated evidence of who was last to use the door prior to Mr Kearins, who is thought to have exited through it just before 1am. The same door was closed about an hour later by an unknown member of staff carrying out routine checks. It was confirmed by the care home manager that once the door was noted to be insecure, the member of staff should have initiated a head count of all of the residents to ensure their safety. However, this was not carried out.

The HSE investigation found the company had failed to have a safe system of work in place. Records held by the company in relation to the patient extensively noted the clear risk that he might abscond or 'wander'. It was part of his care plan that he be checked or monitored every hour.

A senior care assistant and a care assistant who had responsibility for his care were also found to have falsified

records, stating that they had performed tasks involving him at a time when he was in fact no longer in the home. Both were unaware he was no longer in his room until news of his death became known following the discovery of his body in the car park.

The management failures in respect of the alarm door reactivation were not causative of Mr Kearins' death and would likely not have even come to light but for four individual errors:

- The unidentified member of staff who closed the internal fire door without further action;
- The fire alarm for the internal fire door which had been deactivated
- The unidentified member of staff who left the unalarmed external fire door insecure; and
- The actions of both the senior care assistant and the care assistant.

## The outcome

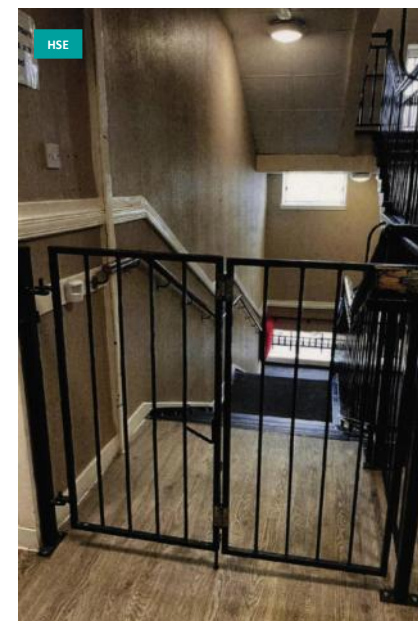
The care home owner pleaded guilty to breaching Sections 3(1) and Section 33(1)(a) of the Health and Safety at Work etc. Act 1974. The company was fined £53,750.

## Additional context

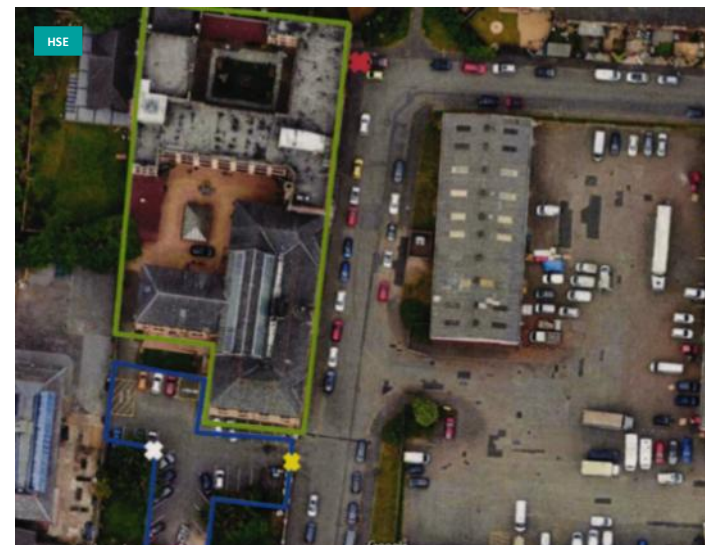
HSE guidance states that the security of doors and gates should be considered where assessment identifies that specific residents leaving the premises will present a significant risk to their safety. It adds that in some instances it may be appropriate to consider devices that alert staff of their location and whether they are at risk of harm.

## More info

See: <https://www.hse.gov.uk/pubns/books/hsg220.htm>



*The fire exit where he left the building*



*The red cross indicates where the patient exited the home, while the white cross shows where he was found the next morning.*



## Consultation opens on restricting PFAS in firefighting foams

### Summary

The Health and Safety Executive (HSE), in its role as the Agency for UK REACH, has opened a six-month public consultation to gather stakeholder views on per- and polyfluoroalkyl substances (PFAS) in firefighting foams.

### Background

The opening of the UK REACH consultation links to the publication of the Annex 15 restriction report, which presents HSE's scientific analysis and evidence base for potential restrictions on PFAS use in firefighting foams in Great Britain. The consultation provides an opportunity for those who use foams from industry, and other stakeholders, such as trade associations, to comment on the proposals before the opinions are made and sent to the Defra Secretary of State, and the Scottish and Welsh Governments for a decision on whether to bring a restriction into law.

### The deadline

The consultation runs until 18 February 2026.

### More info

A Q&A document is available at:

[https://consultations.hse.gov.uk/crd-reach/pfas-in-firefighting-foam-fff-restriction-proposal/user\\_uploads/q-and-a-pfas-firefighting-foams.pdf](https://consultations.hse.gov.uk/crd-reach/pfas-in-firefighting-foam-fff-restriction-proposal/user_uploads/q-and-a-pfas-firefighting-foams.pdf)

More info can be accessed at:

<https://consultations.hse.gov.uk/crd-reach/pfas-in-firefighting-foam-fff-restriction-proposal/>

## HSE inspectors halt use of nine theme park rides

### Summary

Nine rides at a Devon theme park were stopped after a routine inspection by the Health and Safety Executive (HSE). The park was unable to provide sufficient assurance that the rides had undergone valid safety checks, but was able to rectify the issues quickly to minimise disruption.

### What happened

On Thursday 26 June 2025, HSE inspected the venue as part of its ongoing programme of inspections to fixed and mobile fairgrounds across the country. After a company was suspended from the Amusement Device Inspection Procedures Scheme (ADIPS), Declarations of Compliance for the nine rides were missing. HSE took proactive action to stop them being used until the issue was resolved.

The following rides were affected:

- Rocking Tug
- Sea Dragon
- Vertigo
- Trauma Tower
- Tractor Ride
- Submarine Ride
- Dragon Ferris Wheel
- Polar Pilots
- Dizzy Dune Buggies

The theme park engaged an inspection body, who produced the Declarations of Compliance required, meaning the rides could reopen.

## Steel manufacturer fined

### Summary

A steel manufacturer based in Port Talbot has been fined £1.5 million following the death of a contractor at its steelworks.

### What happened

The incident occurred on 25 September 2019. Maintenance work to replace a lift cylinder on a large conveyor system had been completed earlier that day, and the system was in the process of being put back into service when a hydraulic leak was found. The fatally injured man was called to resolve the issue at about 2pm.

Although power was isolated to part of the system, other sections remained live. As staff worked on the lower level to fix the leak, the worker returned to the floor above and climbed into the conveyor system. His presence triggered sensors that activated a moving beam in a live section, fatally injuring him. He was pronounced dead at the scene.

### The investigation

The Health and Safety Executive (HSE) investigation into the incident found that the company failed to ensure the work to replace the lift cylinder was done safely. After the job was completed, the company also failed to properly isolate the conveyor system before he returned to address the leak. The company also failed to ensure the conveyor system was effectively guarded to prevent access to dangerous moving parts of the machinery.

### The outcome

The company pleaded guilty to breaching Sections 2(1) and 3 (1) of the Health and Safety at Work etc. Act 1974. It was fined £1.5 million and ordered to pay £26,318.67 in costs.

## Growing Food from Landfill Gases – A World First?

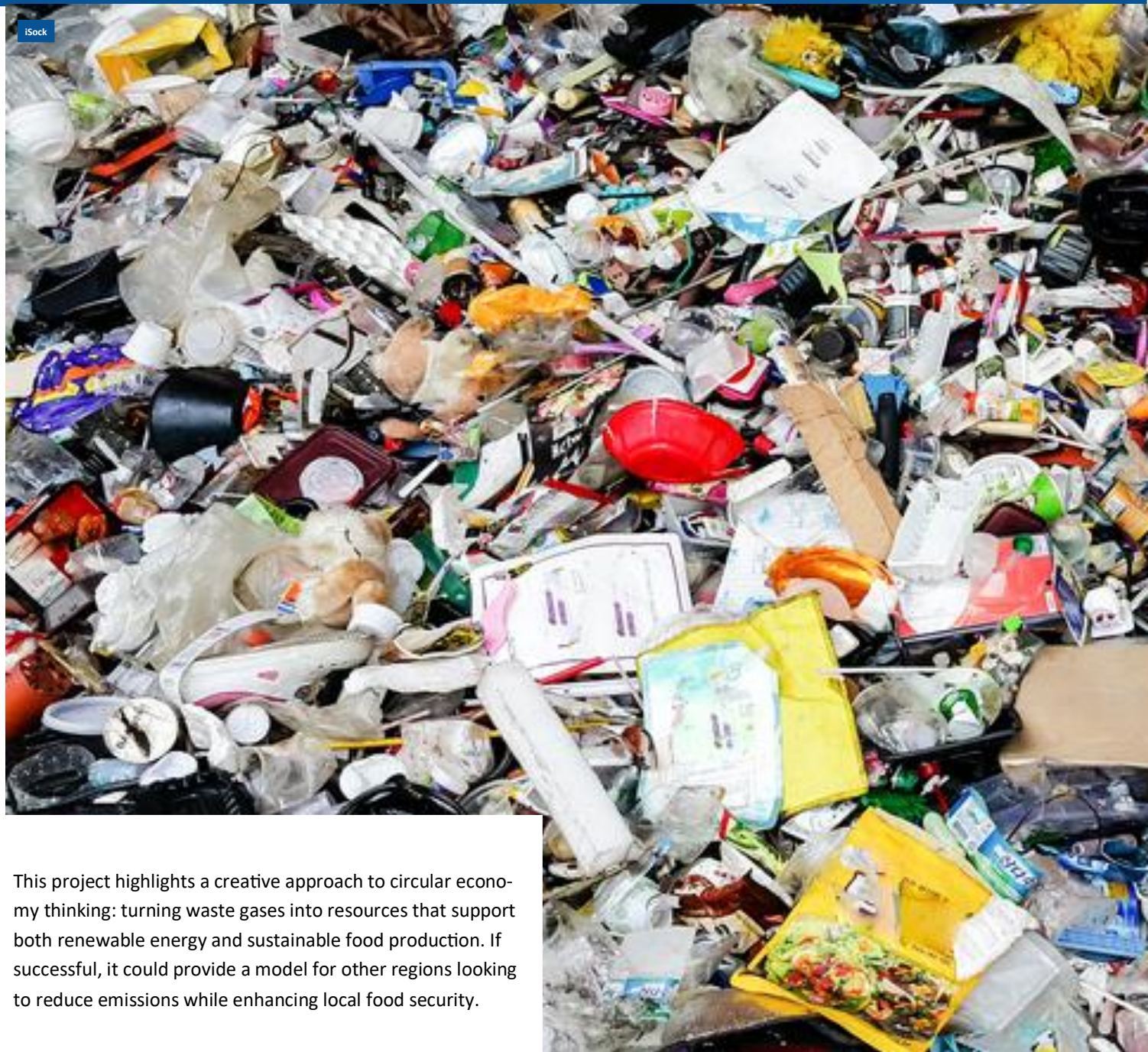
An ambitious project in Wiltshire could soon see fruit and vegetables grown in greenhouses above a landfill site, using cleaned carbon dioxide captured from waste. If approved, it would be the first initiative of its kind anywhere in the world.

The landfill site already captures methane from decomposing waste to generate electricity for its operations and to supply the national grid. During this process, carbon dioxide is also produced as a by-product. Normally, this gas would not be put to further use, but new plans propose redirecting it into on-site greenhouses to support year-round food production.

The greenhouses would not only use the captured CO<sub>2</sub> but also benefit from the heat generated through energy production. This combination could make it possible to grow crops such as avocados – a fruit rarely cultivated commercially in the UK due to climate conditions.

The vision is to provide fresh produce for nearby towns and villages, including Royal Wootton Bassett, Malmesbury, and Brinkworth, creating a direct link between local waste management and sustainable food supply.

To make this possible, part of the landfill would be restructured. Waste would be placed in specially designed, concrete-lined “cells” where gases are collected. These gases undergo a cleaning process, which involves removing harmful substances like hydrogen sulphide and using bacteria to help purify them. The result is cleaner methane for energy generation and CO<sub>2</sub> suitable for greenhouse use.



This project highlights a creative approach to circular economy thinking: turning waste gases into resources that support both renewable energy and sustainable food production. If successful, it could provide a model for other regions looking to reduce emissions while enhancing local food security.



## Two men fined for illegal dumping of waste

### Summary

The Environment Agency has successfully prosecuted two men for illegally dumping excavation waste at a site in Northamptonshire.



### What happened

Farmer discovered dumped waste  
Officers from the Environment Agency were alerted by a farmer who discovered the dumped waste when looking to graze sheep on the land.

The farmer found that the field had been covered in numerous mounds of excavation waste making it unsuitable for grazing.

Due to the wet weather, muddy tyre tracks leading away from the site led officers to a nearby house where excavation work had taken place.

That property was owned by Person A's daughter and son-in-law who informed officers that Person A had gained planning permission to build a house in the grounds of their property.

Person A said that he had employed Person B's company to carry out the building works. He also alleged he had gained permission, some three years previously, to dump the top soil on the site.

However, Person A was unable to name the person from whom he had obtained permission.

The owners of the land confirmed there was no such agreement in place for anyone to deposit waste onto their field. In any event, regardless of whether permission had been granted, there was no environmental permit in place at the site to allow waste to be deposited there.

Person A and Person B said they had little knowledge of the environmental regulations despite having experience of waste disposal as part of their day-to-day businesses.

### The outcome

Both Person A and Person B pleaded guilty to knowingly causing and depositing controlled waste, between 24 and 30 April 2024, on the land without the necessary environmental permit.

Person A was fined £2,000 and ordered to pay £400 to the victims of the offence. He was also ordered to pay prosecution costs of £2,000 and a victim surcharge of £800.

Person B was fined £350 and ordered to pay costs of £500 and a victim surcharge of £350.



## ISEP Foundation Certificate in Sustainability & Environmental Management

Your route to Associate  
Membership of ISEP (AISEP)  
just **£460+VAT**

- **100% Online**
- ISEP-approved **Tutor Support**

# Keep Updated

## Subscribe to Receive This Newsletter Every Month



Send an email to [newsletter@hsqe.co.uk](mailto:newsletter@hsqe.co.uk) to subscribe to our free newsletter

## Check Out the Blogs on Our Website



<https://hsqe.co.uk/blogs/>

## Follow Us on Social Media Platforms



[facebook.com/hsqe.co.uk](https://facebook.com/hsqe.co.uk)



[linkedin.com/company/hsqe-limited](https://linkedin.com/company/hsqe-limited)

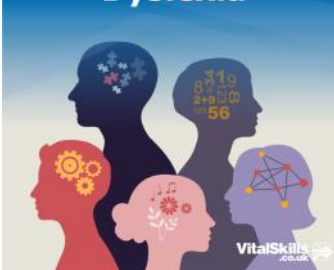
### Winter Wellness: 5 Tips for Better Mental Health



### Learn with Us: Key Learning Styles



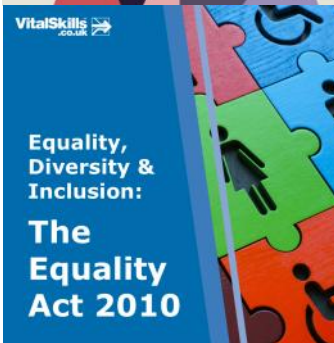
### Celebrating Neurodiversity: Dyslexia



### Mental Health: Supporting Young Minds



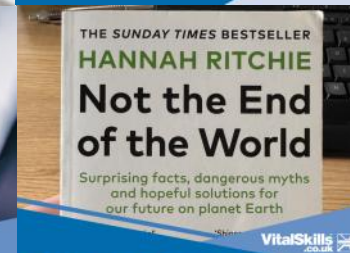
### Safer Internet: Protecting Children Online



### Equality, Diversity & Inclusion: The Equality Act 2010



### Safer Internet: Online Scams



### Our Choice on World Book Day



# Why Choose Our Online Courses?

## Ideal for **individual learners**:

- Immediate start
- 100% online
- 24/7 access
- Study anywhere
- Self-paced learning
- Engaging content
- Fast results

## Ideal for **training coordinators**:

- Free dashboard to enrol students and produce management reports


## Ideal for **organisations**:

- Saves time and money
- Wide selection of courses approved/assured by IOSH, IEMA, RoSPA, IATP, IoH & CPD
- Bundle offers and multi-user discounts
- Rated 4.84 out of 5 on Reviews.co.uk



# IOSH-Approved Courses

**IOSH Safety for Executives and Directors**




IOSH  
8hr approx.  
£95.00 + VAT  
All fees included in price

**IOSH Managing Safely®**




IOSH  
16-24hr approx.  
£125.00 + VAT  
Includes 5 free courses

**IOSH Managing Occupational Health and Wellbeing**




IOSH  
6-8hr approx.  
£125 + VAT  
All fees included in price

**IOSH Safety Health and Environment for Construction Site Workers**




IOSH  
6-8hr approx.  
£95.00 + VAT  
All fees included in price

**IOSH Working Safely®**




IOSH  
6-8hr approx.  
£60.00 + VAT  
All fees included in price

**IOSH Managing Sustainably**




IOSH  
8hr approx.  
£125 + VAT  
All fees included in price

**IOSH Safety Health and Environment for Construction Site Managers**



IOSH  
16-24hr approx.  
£195 + VAT  
All fees included in price

**IOSH Environment for Business**




IOSH  
5hr approx.  
£95.00 + VAT  
All fees included in price

# ISEP-Approved Courses


(Formally IEMA)

**ISEP Foundation Certificate in Sustainability & Environmental Mgt.**




ISEP  
30-40hr approx.  
£460.00 + VAT  
All fees included in price

**ISEP Environmental Sustainability Skills for Managers**




ISEP  
10-14hr approx.  
£125.00 + VAT  
All fees included in price

**ISEP Pathways to Net Zero**



ISEP  
10-14hr approx.  
£175.00 + VAT  
All fees included in price

**ISEP Environmental Sustainability Skills for the Workforce**



ISEP  
6-7hr approx.  
~~£90.00~~ £70.00 + VAT  
All fees included in price


# Sustainability Short Courses

**Environmental Awareness for Construction Workers**




CPD  
60mins approx.  
£6.50 - £15.00 + VAT  
Includes 5 free courses

**Environmental Awareness at Home and Work**




CPD  
90mins approx.  
£6.50 - £15.00 + VAT  
Includes 5 free courses

**Environmental Awareness at Work**



CPD  
60mins approx.  
£6.50 - £15.00 + VAT  
Includes 5 free courses

**Environmental Awareness - Giving up Plastic**



CPD  
60mins approx.  
£6.50 - £15.00 + VAT  
Includes 5 free courses



# Health, Safety & Wellbeing Short Courses

## Abrasive Wheels Awareness



CPD  
 90mins approx.  
 £6.50 - £15.00 + VAT  
 Includes 5 free courses

## Asbestos Awareness (Category A)



RoSPA & CPD  
 180mins approx.  
 £6.50 - £15.00 + VAT  
 Includes 5 free courses

## Asbestos Awareness (IATP)



IATP  
 180mins approx.  
 £6.50 - £15.00 + VAT  
 Includes 5 free courses

## Asbestos Awareness for Architects and Designers



RoSPA & CPD  
 180mins approx.  
 £6.50 - £15.00 + VAT  
 Includes 5 free courses

## Asbestos Awareness for Architects and Designers (IATP)



IATP  
 180mins approx.  
 £6.50 - £15.00 + VAT  
 Includes 5 free courses

## Confined Space Awareness



RoSPA & CPD  
 90mins approx.  
 £6.50 - £15.00 + VAT  
 Includes 5 free courses

## COSHH Awareness



RoSPA & CPD  
 90mins approx.  
 £6.50 - £15.00 + VAT  
 Includes 5 free courses

## Display Screen Equipment (DSE) Awareness



CPD  
 90mins approx.  
 £6.50 - £15.00 + VAT  
 Includes 5 free courses

## Display Screen Equipment (DSE) Assessor Awareness



CPD  
 120mins approx.  
 £6.50 - £15.00 + VAT  
 Includes 5 free courses

## Electrical Safety Awareness



RoSPA & CPD  
 90mins approx.  
 £6.50 - £15.00 + VAT  
 Includes 5 free courses

## Fire Extinguisher Awareness



RoSPA & CPD  
 60mins approx.  
 £6.50 - £15.00 + VAT  
 Includes 5 free courses

## Fire Safety Awareness



RoSPA & CPD  
 90mins approx.  
 £6.50 - £15.00 + VAT  
 Includes 5 free courses

## Fire Warden / Fire Marshall



RoSPA & CPD  
 90mins approx.  
 £6.50 - £15.00 + VAT  
 Includes 5 free courses

## Health Safety and Welfare for Workers



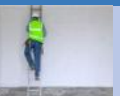
RoSPA & CPD  
 4.5hr approx.  
 £12.50 - £25.00 + VAT  
 Includes 5 free courses

## Infection Prevention and Control Awareness



CPD  
 90mins approx.  
 £6.50 - £15.00 + VAT  
 Includes 5 free courses

## Ladder Safety Awareness



RoSPA & CPD  
 90mins approx.  
 £6.50 - £15.00 + VAT  
 Includes 5 free courses

## Legionella Awareness



RoSPA & CPD  
 90mins approx.  
 £6.50 - £15.00 + VAT  
 Includes 5 free courses

## Lone Working Awareness



RoSPA & CPD  
 90mins approx.  
 £6.50 - £15.00 + VAT  
 Includes 5 free courses

## Manual Handling Awareness



RoSPA & CPD  
 90mins approx.  
 £6.50 - £15.00 + VAT  
 Includes 5 free courses

## Mental Health Awareness



RoSPA & CPD  
 90mins approx.  
 £6.50 - £15.00 + VAT  
 Includes 5 free courses

## Mental Health Awareness for Managers



RoSPA & CPD  
 90mins approx.  
 £6.50 - £15.00 + VAT  
 Includes 5 free courses

## Method Statement Awareness



RoSPA & CPD  
 90mins approx.  
 £6.50 - £15.00 + VAT  
 Includes 5 free courses

## Moving and Handling People Awareness



CPD  
 90mins approx.  
 £6.50 - £15.00 + VAT  
 Includes 5 free courses

## Noise Awareness



RoSPA & CPD  
 90mins approx.  
 £6.50 - £15.00 + VAT  
 Includes 5 free courses

## Risk Assessment Awareness



RoSPA & CPD  
 90mins approx.  
 £6.50 - £15.00 + VAT  
 Includes 5 free courses

### Sharps Awareness



RoSPA & CPD  
 90mins approx.
 £6.50 - £15.00 + VAT  
 Includes 5 free courses

### Silica Dust Awareness



RoSPA & CPD  
 90mins approx.
 £6.50 - £15.00 + VAT  
 Includes 5 free courses

### Slips and Trips Awareness



RoSPA & CPD  
 60mins approx.
 £6.50 - £15.00 + VAT  
 Includes 5 free courses

### Slips, Trips and Falls Awareness



RoSPA & CPD  
 90mins approx.
 £6.50 - £15.00 + VAT  
 Includes 5 free courses

### Stress Awareness



RoSPA & CPD  
 90mins approx.
 £6.50 - £15.00 + VAT  
 Includes 5 free courses

### Stress Awareness for Managers



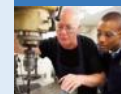
RoSPA & CPD  
 90mins approx.
 £6.50 - £15.00 + VAT  
 Includes 5 free courses

### Vibration Awareness



RoSPA & CPD  
 90mins approx.
 £6.50 - £15.00 + VAT  
 Includes 5 free courses

### Work Equipment Awareness



RoSPA & CPD  
 90mins approx.
 £6.50 - £15.00 + VAT  
 Includes 5 free courses

### Working at Height Awareness



RoSPA & CPD  
 90mins approx.
 £6.50 - £15.00 + VAT  
 Includes 5 free courses

# Food Safety & Hygiene Short Courses

### Food Allergen Awareness



IoH, RoSPA & CPD  
 90mins approx.
 £6.50 - £15.00 + VAT  
 Includes 5 free courses

### Food Safety and Hygiene - Level 1



IoH, RoSPA & CPD  
 60mins approx.
 £6.00 - £10.00 + VAT  
 Includes 5 free courses

### Food Safety and Hygiene (Retail) Level 2



IoH, RoSPA & CPD  
 90mins approx.
 £6.50 - £12.00 + VAT  
 Includes 5 free courses

### HACCP for Catering Level 2



IoH & CPD  
 90mins approx.
 £6.50 - £15.00 + VAT  
 Includes 5 free courses

### Food Safety and Hygiene (Catering) Level 2



IoH, RoSPA & CPD  
 90mins approx.
 £6.50 - £12.00 + VAT  
 Includes 5 free courses

### Food Safety and Hygiene (Manufacturing) Level 2



IoH, RoSPA & CPD  
 90mins approx.
 £6.50 - £12.00 + VAT  
 Includes 5 free courses

### HACCP for Manufacturing Level 2



IoH & CPD  
 90mins approx.
 £6.50 - £15.00 + VAT  
 Includes 5 free courses

### HACCP for Retail Level 2



IoH & CPD  
 90mins approx.
 £6.50 - £15.00 + VAT  
 Includes 5 free courses



# Safeguarding Short Courses

## Autism Awareness



CPD  
90mins approx. £6.50 - £15.00 + VAT  
Includes 5 free courses

## Designated Safeguarding Lead (Adults)



CPD  
150mins approx. £12.50 - £25.00 + VAT  
Includes 5 free courses

## Safeguarding Children Level 1



CPD  
90mins approx. £6.50 - £15.00 + VAT  
Includes 5 free courses

## Child Mental Health Awareness



CPD  
90mins approx. £6.50 - £15.00 + VAT  
Includes 5 free courses

## Extremism and Radicalisation Awareness



CPD  
90mins approx. £6.50 - £15.00 + VAT  
Includes 5 free courses

## Safeguarding Children (Advanced) Level 2



CPD  
120mins approx. £7.50 - £20.00 + VAT  
Includes 5 free courses

## Child Online Safety Awareness



CPD  
90mins approx. £6.50 - £15.00 + VAT  
Includes 5 free courses

## Mental Health Awareness



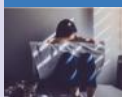
CPD  
90mins approx. £6.50 - £15.00 + VAT  
Includes 5 free courses

## Safeguarding Vulnerable Adults Level 1



CPD  
90mins approx. £6.50 - £15.00 + VAT  
Includes 5 free courses

## Child Sexual Exploitation Awareness



CPD  
90mins approx. £6.50 - £15.00 + VAT  
Includes 5 free courses

## Mental Health Awareness for Managers



CPD  
90mins approx. £6.50 - £15.00 + VAT  
Includes 5 free courses

## Safeguarding Vulnerable Adults (Advanced) Level 2



CPD  
120mins approx. £7.50 - £20.00 + VAT  
Includes 5 free courses

## Designated Safeguarding Lead (Children)



CPD  
150mins approx. £12.50 - £25.00 + VAT  
Includes 5 free courses

## Modern Slavery Awareness



CPD  
90mins approx. £6.50 - £15.00 + VAT  
Includes 5 free courses

## Safer Recruitment Awareness



CPD  
90mins approx. £6.50 - £15.00 + VAT  
Includes 5 free courses

# Business Short Courses

## Data Protection and GDPR Awareness



CPD  
90mins approx. £6.50 - £15.00 + VAT  
Includes 5 free courses

## Equality, Diversity and Inclusion Awareness



CPD  
90mins approx. £6.50 - £15.00 + VAT  
Includes 5 free courses

## Anti-Bribery Awareness



CPD  
90mins approx. £6.50 - £15.00 + VAT  
Includes 5 free courses

## Anti-Money Laundering Awareness



CPD  
90mins approx. £6.50 - £15.00 + VAT  
Includes 5 free courses

## Cyber Security Awareness



CPD  
90mins approx. £6.50 - £15.00 + VAT  
Includes 5 free courses